



EPIC-ADAMM

Advanced Data Analysis Measurement Monitor

EPIC-ADAMM



Edmunds Gages introduces EPIC-ADAMM Touch, a sophisticated dimensional measurement amplifier able to interpret, display and store precise comparative dimensional measurements quickly at a “Touch” of the screen. Effective results increasing productivity, on the shop floor.

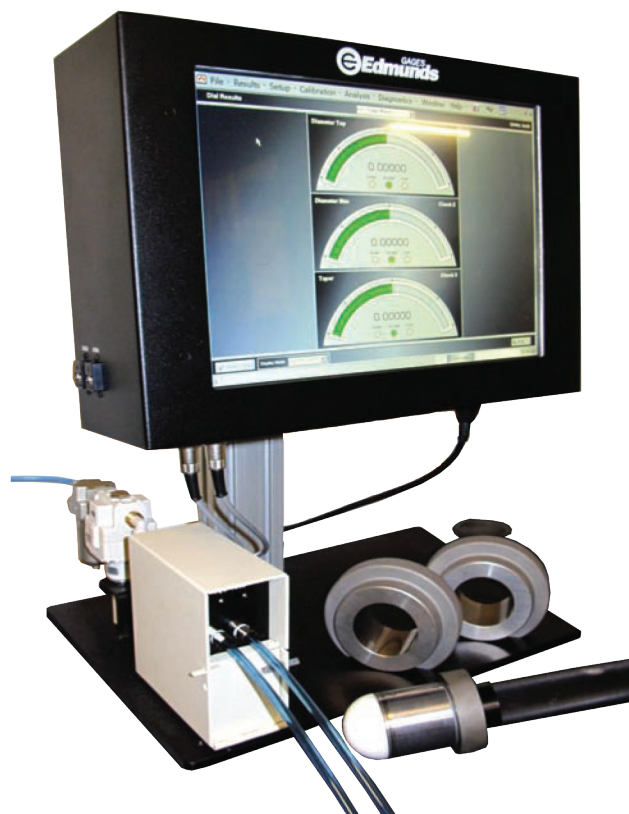
EPIC-ADAMM Touch bridges the gap between single element gaging amplifiers with no data retention and the cumbersome personal computers often used on the shop floor. EPIC-ADAMM’s effectiveness comes from its functionality, ease of use, and ability to record and store data from your measurements over time.

Versatile and durable, EPIC-ADAMM meets the everyday data gathering needs of the operator, while accumulating process control information and statistics for long term quality control management.

Easy to use tool bar icons and pull-down menus provide the user full programmability. An optional mouse and on-screen software keyboard, or optional keyboard/track ball, provide reliable and convenient user interfaces from Edmunds Gages LVDT probes and air-to-electronic transducer devices.

The GFG protected 15” resistive touch screen provides the ease to select and view the numerous graphic displays. Mounted in a single shop hardened enclosure from a standard Vesa mount, the EPIC-ADAMM Touch can be mounted convenient to the user, or from an optional bench stand which includes mounting holes for Edmunds Gages popular 800 series air-to-electronic transducers.

Whether you need a quick analysis or a detailed interpretation of statistics, EPIC-ADAMM Touch is designed to track and document conformity to specifications and tolerances across multiple products or product lines.



EPIC-ADAMM Touch with optional support stand, A/E transducer, and manual air gaging tools.

ADVANCED ANALYSIS

With easy to read screens, EPIC-ADAMM Touch displays up to 12 measurements from single gaging fixture, or as many as 8 single element gages used independently. EPIC-ADAMM Touch's capabilities include extended mathematic logarithmic and trigonometric functions that enable users to compute basic mathematical equations or advanced algebraic equations.

CLEAR RESULTS

EPIC-ADAMM Touch's window-style menus allow users to easily analyze data, discern good products from bad, and quickly identify variations from specifications. Gaging results are displayed in easy to understand bar graphs, digital, or dial type formats ensuring quick and accurate interpretation. Multi-screen viewing allows the user to choose multiple menus appropriate to the process function. And the large pull down screen buttons make selections of various menus simple and easy, even when operators are using protective gloves

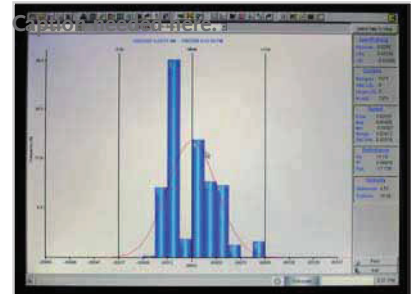
EPIC-ADAMM Touch's software uses a combination of tool bar icons and pull-down menus. The familiar Windows simplicity provides an additional level of comfort to the everyday user, with the ability to create personalized multi-window displays.

RELIABLE REPORTING

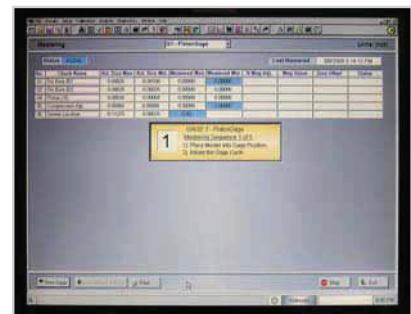
EPIC-ADAMM Touch's data and time specific performance records provide a reliable history of daily operations. Reporting outputs include the statistical analyses and standard deviations necessary to document quality and process performance. Data may be displayed using Statistical ProcessControl charts such as x-bar, range charts, histogram, scatter charts, ensuring consistency and compliance at every stage in the process.



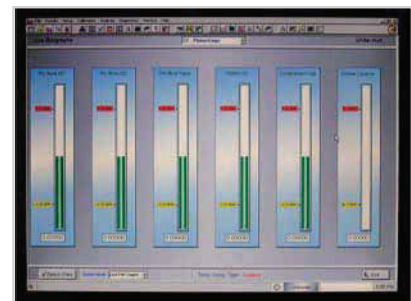
Multi-window display arranged by the operator's preference.



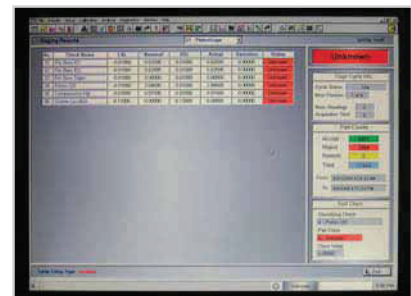
S.P.C. and histograms depicted by measurement feature.



Automatic mastering prompts the user through calibration.



Individual bar graphs depicted by measurement feature.



Counters and other managerial reporting features.

EPIC-ADAMM TOUCH

EPIC-ADAMM TOUCH

8-INPUT UNIT:

- #7951051A - Air Saver capable

OUTPUT PORTS:

- (2) Ethernet Port
- (2) RS-232-C Serial Ports
- (4) USB ports

SOFTWARE:

Windows X-P Embedded O.S. with
Edmunds EPIC-ADAMM Software
8-Gage, 12 check software - Standard
Auto recognition

FOOTPRINT SIZE ON STAND:

16" W x 12" D x 22" H
(406 W x 305 D x 559 mm H)

VOLUMETRIC SIZE:

16" W x 5.5" D x 14.2" H

POWER REQUIREMENTS:

100 to 240 VAC, 50 to 60 Hz

WEIGHT:

15 lbs. (6.8 kg)

ACCESSORIES:

- Qualified Memory Stick #4570642
- USB Wireless Mouse #7950911
- Bench Top Support Stand #G-53125
- USB Pushbutton #7950918
- Air Saver #7940940/#7951072

EPIC-ADAMM Touch is available with 8 input capacity from Edmunds Gages LVDT or air-to-electronic transducer inputs. Numerous standard Ethernet, Serial RS-232C and USB ports for printing and downloading of data for immediate and long term storage.



Left side view on support stand



Bottom panel view



45 Spring Lane
Farmington, CT USA 06032
TEL (860) 677-2813
FAX (860) 677-4243
www.edmundsgages.com